

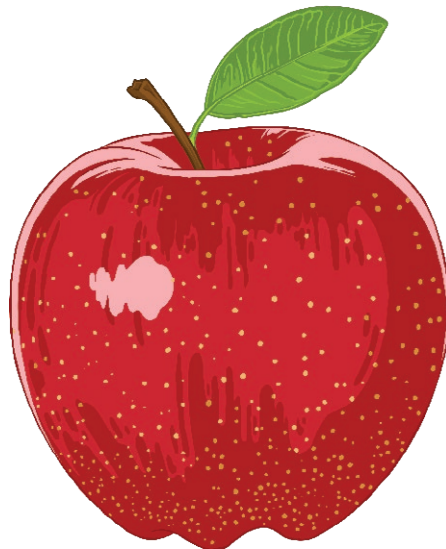
# Colour Profile: Tone

## What is tone?

In art, tone refers to the areas of **lightness** and **darkness** on an object or colour. How we view tones depends on the surface of the object. Colour tone is created by adding different amounts of white or light colours for light tones, or gradually adding different amounts of black, grey or dark colours for darker shades.

## Why use different tones?

Tone is used to show the way light falls onto an object and gives a 3D effect to the work and object. The parts of the object that are lightest are the **highlights** and the darker areas show **shadow**. The colours in between should be a range of different shades of the lightest and darkest colours.



Light

Medium

Dark



visit [twinkl.com](https://www.twinkl.com)