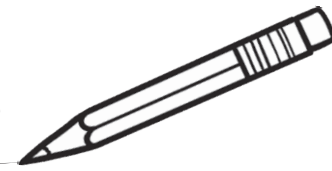

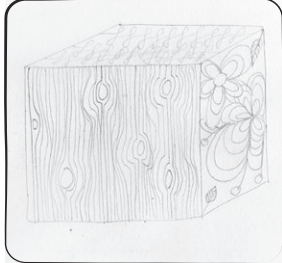


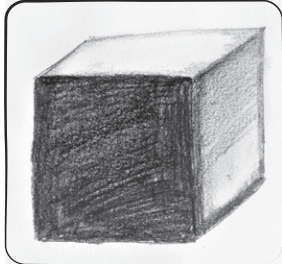


A Guide to Using Sketching Pencils



The inside of pencils can be either **soft** or **hard**. Most sketching pencils have numbers and letters on them that tell us about the hardness of the pencil. This can help us decide which pencil to use for our project.



<p>H stands for 'hard'.</p>	<p>These pencils leave a light mark on the paper.</p> 	<p>Hard pencils are great for drawing details.</p> 	<ul style="list-style-type: none"> • Don't press too hard! You might tear the paper. 
<p>B stands for 'black'.</p>	<p>These pencils create heavy, black lines.</p> 	<p>These pencils are best for shading dark areas and blending.</p> 	<ul style="list-style-type: none"> • They will need sharpening often. • If you smudge your drawing, use a rubber to clean it up. 